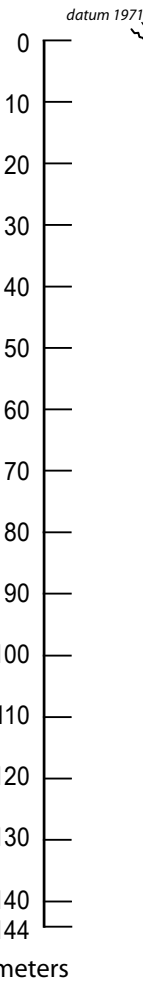


Entrance



Profile

facing 160°

**Sótano de Jineo
(Resumidero de Jineo)
Municipio de Gómez Farfás,
Tamaulipas, México**

Preliminary sketch by William R. Elliott, 18 May 1971.
Suuntos & tape survey, 25-26 Nov. 1971 by Terry Raines,
Roy Brown, D. Christie, Jan Lewis, Logan McNatt, Olga
Reyes & Bob Stockton. Resurveyed 2005 by Peter Sprouse
et al. 1971 extent 423 m, horizontal length 302 m,
depth 144 m below 1971 datum, 150 m below 2005
datum at 380 m elevation. Drawn by Elliott, 2014.

Corkscrew

North Branch

South Branch

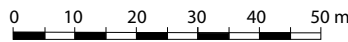
Astyanax cavefish pools

mud sump 2005

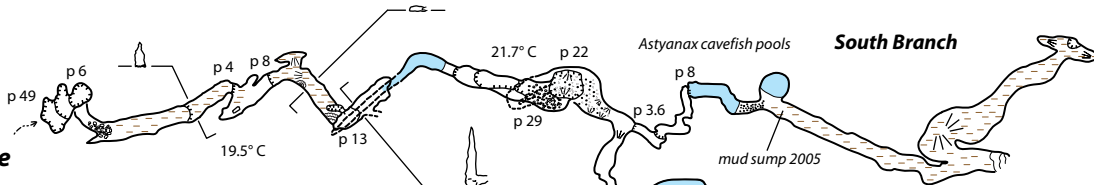
unmeasured pit 1971

terminal sump 2005

Plan



Entrance



Corkscrew detail

North Branch

unmeasured pit